

# GR-1450EX



Crane capacity :  
**145,000 kg at 2.5 m**

6-section long boom :  
**13.1 m - 61.0 m**

2-staged bi-fold jib :  
**10.3 / 18.0 m**

Maximum lifting height :  
**61.3 m ( Boom )**  
**78.2 m ( Hydraulic Offset Jib )**  
**78.4 m ( Manual Offset Jib )**

Maximum load radius :  
**56.0 m ( Boom )**  
**64.0 m ( Hydraulic Offset Jib )**  
**64.9 m ( Manual Offset Jib )**

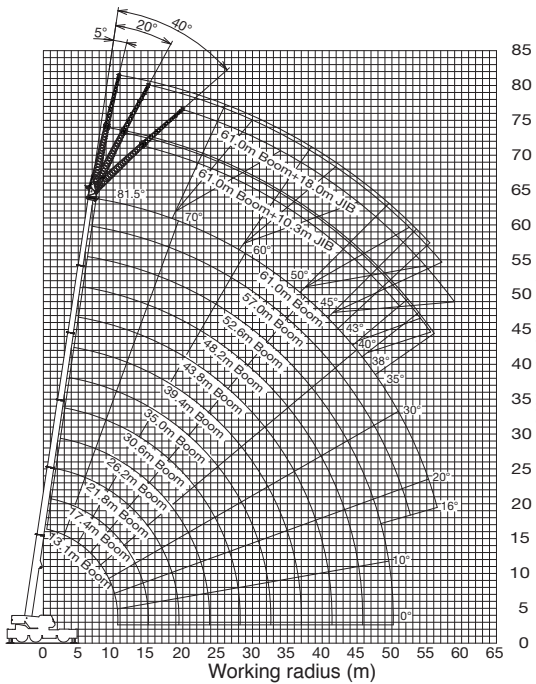
# MODEL : GR-1450EX

## SPECIFICATIONS

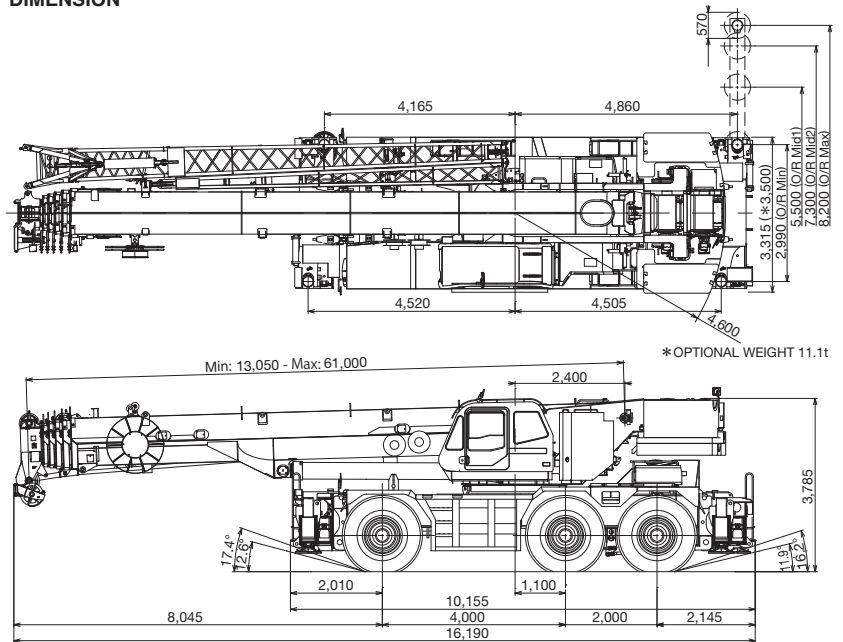
MAXIMUM CAPACITY	145,000 kg at 2.5 m
PERFORMANCE	
Max.traveling Speed (with counterweight)	15 km/h
Gradeability (tan $\theta$ ) (with 18.2t counterweight)	52 % (at stall) $\approx$ 30 % $\approx$ Machine should be operated within the limit of engine crankcase design (17": MITSUBISHI 6M60-TL).
WEIGHT	
Gross vehicle mass	91,154 kg    * 90,805 kg    * Manual offset jib
-1st axle	29,398 kg    * 28,701 kg
-2nd axle	30,640 kg    * 30,814 kg
-3rd axle	31,116 kg    * 31,290 kg
MIN.TURNING RADIUS	14.9 m (2-wheel steering) 9.9 m(6-wheel steering) (at center of extreme outer tire)
BOOM	
6-sections extended by single telescoping cylinder.	
Fully retracted length	13.1 m
Fully extended length	61.0 m
Extension speed	47.9 m in 450 s
Elevation speed	20° to 60° in 28 s
JIB	
Two staged slewing around boom extension;	
• Offset angle (5°-40°) by tilt cylinder.	
• * Triple offset (0°/20°/40°) type.	
Length	10.3 m and 18.0 m    * Manual offset jib
MAIN WINCH	
Variable speed type with grooved drum driven by hydraulic axial piston motor.	
Single line pull	70.6 kN {7,200 kgf}
Single line speed	136 m/min. (at the 4th layer)
Wire rope	19 mm (diameter)
AUXILIARY WINCH	
Variable speed type with grooved drum driven by hydraulic axial piston motor.	
Single line pull	70.6 kN {7,200 kgf}
Single line speed	136 m/min. (at the 4th layer)
Wire rope	19 mm (diameter)
SLEWING SPEED	
Tail swing radius	1.3 min <sup>-1</sup> {rpm}
4,600 mm	
HYDRAULIC SYSTEM	
Pumps... 2 variable piston pumps for crane functions. Tandem gear pump for steering, slewing and optional equipment.	
Control valves....	
Multiple valves actuated by pilot pressure with integral pressure relief valves.	
Circuit.... Equipped with air cooled type oil cooler. Oil pressure appears on AML display for main circuit.	
Hydraulic oil tank capacity.... approx. 763 liters	
Filters.... Return line filter	

TADANO Automatic Moment Limiter (Model: AML-C)	Main unit in crane cab gives audible and visual warning of approach to overload. Automatically cuts out crane motions before overload. With working range (load radius and/or boom angle and/or tip height and/or swing range) limit function. Automatic Speed Reduction and Slow Stop function on boom elevation and slewing. Following functions are displayed. • Load as percentage • Number of parts of line of rope • Boom angle • Boom length • Load radius • Outriggers position • On-tire indicator • Actual hook load • Permissible load • Boom position indicator • Potential hook height • Slewing angle • Main hydraulic oil pressure • Jib length and jib offset angle (only when jib in operation)
OUTRIGGERS	Hydraulically operated H-type outriggers. Each outrigger controlled simultaneously or independently from the cab. Equipped with sight level gauge. Floats can be stowed on vertical cylinders or removed to improve approach and departure angles. All cylinders fitted with pilot check valves. Crane operation with different extended length of each outrigger. Equipped with extension width detector for each outrigger. Outrigger unit is self-removable for ease of transportation.
Extended width	Fully ... 8,200 mm, Middle ... 7,300 mm & 5,500 mm Minimum ... 2,990 mm, Float size (diameter) ... 570 mm
CARRIER	Rear engine, left-hand steering, driving axle 2-way selected type by manual switch. 6 x 2 1st drive, 6 x 4 1st and 3rd drive
ENGINE	Model..... MITSUBISHI 6M60-TL Type .....4 cycle, turbo charged and after cooled, 6 cylinder in line, direct injection, water cooled diesel engine. Piston displacement...7,540 cm <sup>3</sup> Max.output...200 kW at 2,600 min <sup>-1</sup> {rpm} Max.torque ...785 N-m at 1,400 min <sup>-1</sup> {rpm}
TRANSMISSION	Electronically controlled full automatic transmission.
STEERING	Hydraulic power steering controlled by steering wheel. 4 steering modes available: 2-wheel front, 4-wheel rear 6-wheel coordinated, 6-wheel crab
SUSPENSION	1st..... Rigid mounted to the frame. 2nd, 3rd....."Hydro-Pneumatic suspension cylinders" with leveling adjustment and oscillation.
TIRES	26.5R25☆☆, Air pressure: 650kPa
FUEL TANK CAPACITY	300 liters

## WORKING RANGE



## DIMENSION



There are two specification sheets available, Hydraulic offset jib and Manual offset jib, so please see specification sheet to clarify all your technical concerns. Working range and dimension chart show Hydraulic offset jib.

\*Some specifications are subject to change



TADANO LTD. (International Division)

4-12, Kamezawa 2-chome, Sumida-ku Tokyo 130-0014, Japan

Phone: 81-3-3621-7750 Fax: 81-3-3621-7785

http://www.tadano-global.com E-mail: tdnihq@tadano.co.jp